

OUTDOOR WEAR

WHEN THE WEATHER IS AGAINST YOU DICKIES OUTDOOR WEAR WON'T LET YOU DOWN. WET WEATHER PROTECTION AND WARM WINTER JACKETS ARE AVAILABLE IN A VARIETY OF STYLES AND FABRICS.



WATERPROOF

A SELECTION OF WATERPROOF GARMENTS FEATURING TAPE WELDED SEAMS FOR OPTIMUM FOUL WEATHER PROTECTION.



Eisenhower Parka Jacket page 49



Eisenhower Bomber Jacket page 51



Motorway Safety Jacket page 91



Highway Safety Trousers page 92



Eisenhower Overtrousers page 51



Motorway Safety Jacket page 77



High Vis Bomber Jacket page 78



Two Tone Motorway Safety Jacket page 79



5-in-1 High Vis Executive Jacket page 80



Highway Safety Trousers page 85



High Vis Unlined Fieldtex Jacket page 95



Fieldtex Trousers page 95



Fieldtex Jacket page 137



Fieldtex Trousers page 137



Workdri Suit page 138



Waterproof Padded Coverall page 139



Vermont Waterproof Suit page 140



Childrens' Vermont Waterproof suit page 141



Contact Work Coat page 144



Colorado 3-in-1 Jacket page 145



NEW Arctic Shield Nylon Jacket page 146



Lewis Jacket page 147



Delaware Jacket page 149



Cambridge Jacket page 151



Westfield Wax Jacket page 162



Wax Leggings page 163



Wax Trousers page 163



Waterford Jacket page 165



Fieldtex Breathable Fabric

The outstanding benefits of this breathable fabric include being machine washable; oil, petrol and diesel resistant; virtually noiseless in action; lightweight and having a built in stretch factor. All garments are waterproof with taped seams.



FIELDTEX

WATERPROOF CLOTHING MADE FROM A HIGH PERFORMANCE FABRIC. BREATHABLE FIELDTEX IS THE MODERN ANSWER TO AN AGE-OLD PROBLEM: HOW TO KEEP DRY AND COMFORTABLE WHEN WORKING IN THE WET?



Fieldtex Jacket

- Stud fastened hood with drawcord adjustment.
- Two way zip under full studded double stormflap.
- Two patch pockets with flaps.
- Adjustable studs at wrist.
- Drawcord hem.

Fabric Fieldtex breathable and waterproof PU coated polyester
Sizes S, M, L, XL, XXL, XXXL
Colours Green, Navy
Code WP51460



Fieldtex Trousers

- Elasticated waist.
- Side access pockets.
- Adjustable studs at ankles.

Fabric Fieldtex breathable and waterproof PU coated polyester
Sizes S, M, L, XL, XXL, XXXL
Colours Green, Navy
Code WP51470



Available in these colours

Green

Navy



Workdri Suit

- Zip front with press stud stormflap.
- Two external pockets.
- Draw cord hood and hem.
- Elasticated waist trousers.

Fabric Waterproof PVC coated polyester with tape welded seams

Sizes S, M, L, XL, XXL

Colours Olive, Yellow

Code WP42005



Available in these colours

Olive

Yellow

Waterproof Padded Coverall

- Heavy duty zip front under velcro fastened stormflap.
- Multi detailed chest pockets.
- Two back pockets including rule pocket.
- Velcro adjustable hems.
- Velcro adjustable cuffs.
- Drawcord adjustable hood.
- Reflective piping detail.
- Back elasticated waist.

Fabric Polyester Oxford with PU transparent coating. Quilted lining 100% polyester, 160gsm

Sizes M, L, XL, XXL

Colour Olive

Code WP15000



Vermont Waterproof Suit

Jacket

- Zip fastened front with studded stormflap.
- Elasticated cuffs.
- Tail hem with drawcord adjustment.
- Two jet pockets.
- Mesh buggy lining.
- Raglan sleeves.

Trouser

- Full elasticated waist.
- Side access.
- Stud adjustable ankle width.

Fabric

100% polyester PVC waterproof fabric with taped seams

Sizes

S, M, L, XL, XXL

Colours

Green, Navy, Yellow

Code

WP10050

Trousers are also available separately in Green and Navy only, in sizes S, M, L, XL, XXL – Code WP10000.



Available in these colours

Green

Navy

Yellow

Childrens' Vermont Waterproof Suit

Jacket

- Zip fastened front with studded stormflap.
- Elasticated cuffs.
- Tail hem with drawcord adjustment.
- Two jet pockets.
- Reflective tape detailing.
- Raglan sleeves.

Trouser

- Full elasticated waist.
- Side pocket access.

Fabric

100% polyester PVC waterproof fabric with taped seams

Sizes

3-4, 5-6, 7-8, 9-10, 11-12

Colours

Green, Navy

Code

WP11000



Available in these colours

Green

Navy



OUTDOOR WEAR

JACKETS

THE CUSTOMER WILL FIND EVERYTHING FROM TOUGH WORK JACKETS TO SMART CASUAL STYLES IN THIS EXCITING COLLECTION. BUT ALL GARMENTS BEAR THE UNMISTAKABLE MARK OF DICKIES QUALITY CONSTRUCTION.



Redhawk Jacket
page 26



Chefs' Jacket
page 32



Chefs' Jacket
page 34



Eisenhower Work Jacket
page 46



Eisenhower Bonded Fleece Jacket
page 48



Eisenhower Parka Jacket
page 49



Eisenhower Bomber Jacket
page 51



Delta Jacket
page 52



Grafter Jacket
page 58



Dickies Proban Jacket
page 68



NEW Flame Retardant High Vis Antistatic Jkt
page 74



Motorway Safety Jacket
page 77



High Vis Bomber Jacket
page 78



Two Tone Motorway Safety Jacket
page 79



5-in-1 High Vis Executive Jacket
page 80



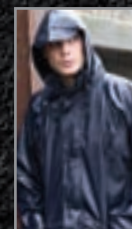
Motorway Safety Jacket
page 91



High Vis Unlined Fieldtex Jacket
page 95



High Vis Polycotton Safety Jacket
page 97



Fieldtex Jacket
page 137



Contact Work Coat
page 144



Colorado 3-in-1 Jacket
page 145



NEW Arctic Shield Nylon Jacket
page 146



Lewis Jacket
page 147



Duck Jacket
page 148



Delaware Jacket
page 149



NEW Softshell Jacket
page 150



Cambridge Jacket
page 151



Westfield Wax Jacket
page 162



Arlington Jacket
page 164



Waterford Jacket
page 165



Winchester Jacket
page 166

OUTDOOR WEAR



Contract Work Coat

- Zipped front with studded stormflap.
- Two chest pockets with stud fastened flaps.
- Mobile phone pocket on chest.
- Two lower bellowed patch pockets with stud fastened flaps.
- Internally adjustable drawcord waist.
- Concealed hood.
- Cord trimmed collar.
- Knitted storm cuff.

Fabric 100% polyester with PVC backing taped seams

Sizes S, M, L, XL, XXL, XXXL

Colours Black, Green, Navy

Code JW23000



Available in these colours



Colorado 3-in-1 Jacket

- Concealed hood.
- Two waterproof zipped chest pockets.
- Underarm zipped vent.
- Draw cord waist.
- Adjustable velcro cuff fastening.
- Two zipped lower pockets.
- Two way zip front with embossed velcro stormflap.
- Tail hem.
- 3-in-1 Colorado can be worn together, as a jacket only or as a fleece only.
- Inner fleece with two jetted pockets.

Fabric 100% nylon Taslan with PU milky coating, all seams are tape welded. Inner jacket two tone 100% polyester anti-pill polar fleece

Sizes M, L, XL, XXL

Colour Midnight Blue

Code JW33025





RE-tain™ is a thin multi-layered heat resistant thermal barrier that captures and reflects up to 97% of body heat. RE-tain™ is naturally waterproof, windproof and breathable, plus the unique open-cell inner layer helps wick away moisture.



Arctic Shield Nylon Jacket

- RE-tain™ heat barrier in a lightweight jacket.
- Zip front with stud fastened stormflap.
- Detachable hood with zip.
- Two lower pockets with stud fastened flap and side handwarmer access.
- Two chest pockets, one with zip entry, one with velcro fastened flap side entry.
- Pocket to upper left sleeve with velcro fastening.
- Tab adjustable sleeve cuffs.

Fabric	100% nylon Taslan, 170gsm, with PU coating and water repellent finish. Lining 100% brushed polyester tricot with polyester and RE-tain™ quilted filling
Sizes	M, L, XL, XXL
Colour Code	Dark Navy JW78000



Lewis Jacket

- Raglan sleeves.
- Zipped front.
- Two zipped outer pockets.
- Elasticated waistband.
- Adjustable elasticated cuffs.
- Zip embroidery access.
- One internal pocket.

Fabric	100% polyester with a waterproof PVC coating, seams tape welded. Lining 100% polyester anti-pill polar fleece
Sizes	S, M, L, XL, XXL, XXXL, XXXXL
Colours Code	Black, Navy JW23500



Available in these colours

Black

Navy





Duck Jacket

- Heavy duty YKK metal zip front under velcro stormflap.
- Two deep patch pockets.
- Two chest pockets with velcro fastened flaps.
- Inside patch pocket.
- Corduroy collar.
- Drawcord waist adjustment.
- Triple stitch detail.
- Action back.
- Inner ribbed storm cuff.

Fabric 100% 12oz canvas, with water repellent finish. Lining 100% nylon diamond quilt

Sizes M, L, XL, XXL

Colours Black, Olive Green, Tan

Code JW72500



Available in these colours

Black

Olive Green

Tan

Delaware Jacket

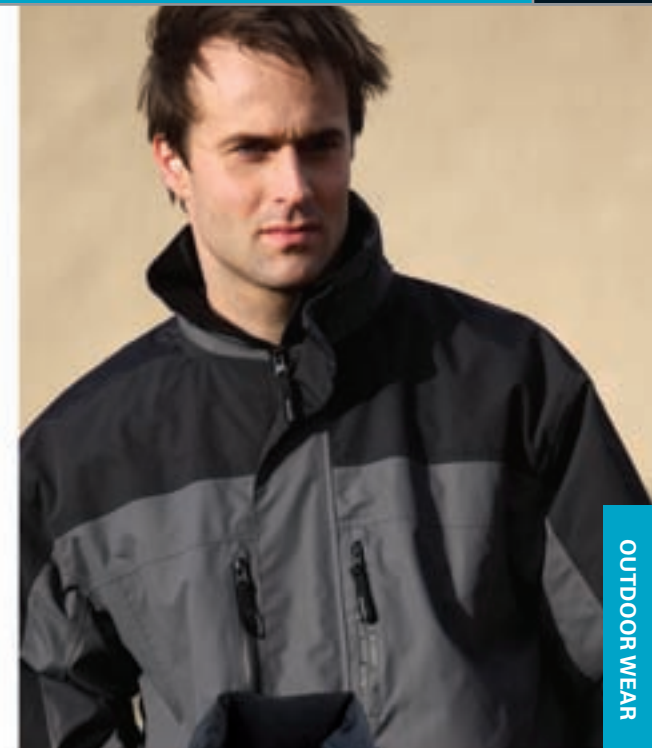
- Lightly padded with upper microfleece lining for extra warmth and comfort.
- Front YKK zip with embossed velcro stormflap.
- Two waterproof zipped chest pockets.
- Two lower zipped pockets.
- Side elastic drawcord adjustment.
- Tail hem.
- Inner mobile phone pocket.
- Inside pocket.
- Inner storm cuff.

Fabric 100% nylon Taslan, with PU milky coating waterproof and breathable, with taped seams. Lining 260gsm microfleece and 100% nylon

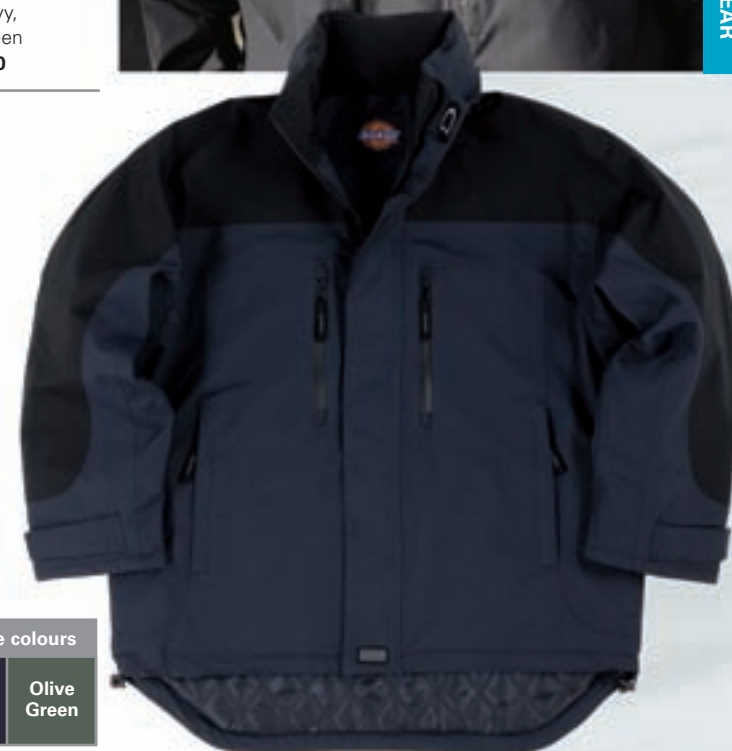
Sizes M, L, XL, XXL

Colours Grey, Navy, Olive Green

Code JW70000



OUTDOOR WEAR



Available in these colours

Grey

Navy

Olive Green



Softshell Jacket

- Water resistant and breathable to 5000mm and 3000mvp.
- Two lower pockets with waterproof zips.
- One upper chest pocket.
- Waterproof zip front.
- Patch pocket to left sleeve with waterproof zip access.
- Side elastic drawcord adjustment.
- Sleeve cuffs with plastic tab adjuster.
- Tail hem.

Fabric 96% polyester, 4% Spandex, bonded fleece, 330gsm

Sizes M, L, XL, XXL

Colours Black with Tobacco contrast panels

Code JW85000



Cambridge Jacket

- YKK zip front with velcro stormflap.
- Two zippered jet pockets.
- Concealed hood with adjuster.
- Side elasticated waistband.
- Tab adjustable cuffs.
- Zip embroidery access.
- Internal mobile phone pocket.
- Internal zipped patch pocket.

Fabric Nylon Taslan, with PU milky breathable and waterproof coating, with tape welded seams. Lining 100% polyester microfleece

Sizes S, M, L, XL, XXL, XXXL

Colours Black, Navy

Code JW23700

Available in these colours

Black

Navy





FLEECE JACKETS

DESIGNED FOR COMFORT AND WARMTH THE FLEECE JACKET MAINTAINS ITS POPULARITY, COMBINING CLASSIC DESIGN WITH A HIGH LEVEL OF MANUFACTURING EXPERTISE TO PRODUCE A SUPERIOR PRODUCT.



Eisenhower Bonded Fleece
page 48



High Visibility Lined Fleece Jacket
page 86



Colorado 3-in-1 with zip-in Fleece
p145



NEW Softshell Jacket
page 150



Microfleece Jacket
page 153



Tampa Fleece
page 154



Albany Fleece
page 155



Seville Fleece
page 156

Microfleece Jacket

- Fully lined.
- Draw cord adjustable hem.
- Two zipped hand warmer pockets.
- Zipped front.
- Internal chest pockets.

Fabric Anti-pill polyester microfleece, 320gsm.
Lining 100% polyester peached microfibre

Sizes M, L, XL, XXL

Colours Navy, **Dark Grey** while stocks last

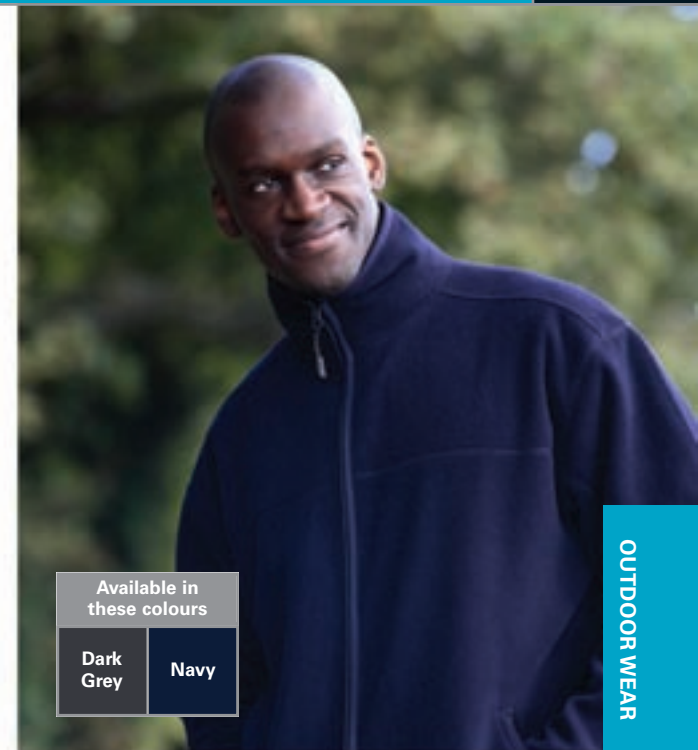
Code JW84400



Available in these colours

Dark Grey

Navy



OUTDOOR WEAR





Albany Fleece

- Two hand warmer pockets.
- One multi-function nylon Oxford chest pocket with pen pocket section and mobile phone pocket with anti-radiation fabrication under velcro flap.
- Left zipped nylon Oxford chest pocket.
- Mesh metal eyelet detailing.
- Heavy weight plastic zipped front.
- Nylon Oxford shoulder panel.
- Hem elastic drawcord adjustment.
- Elastic cuff.

Fabric	100% polyester polarfleece 300gsm, with nylon Oxford trim
Sizes	M, L, XL, XXL
Colour	Black
Code	JW84440

OUTDOOR WEAR



Tampa Fleece

- Water resistant and breathable to 5000mm and 3000mvp.
- Two zipped pockets.
- One upper chest pocket with waterproof zip fastening.
- Zipped front.
- Side elastic drawcord adjustment.
- Knitted cuff.
- Tail hem.

Fabric	100% polyester micro polarfleece, 340gsm, with mesh lamination
Sizes	M, L, XL, XXL
Colours	Grey, Navy, Olive Green
Code	JW84420



Available in these colours

Grey

Navy

Olive Green





Available in these colours	
Black	Bottle Green
Charcoal Grey	Navy

Seville Fleece

- Set in sleeve.
- Elasticated cuffs.
- Draw cord adjustable hem.
- Two zipped hand warmer pockets.
- Zipped front.

Fabric Anti-pill polyester polarfleece, 360gsm
Sizes S, M, L, XL, XXL
Colours Black, Bottle Green, Navy, Charcoal Grey while stocks last
Code JW82015



BODYWARMERS

THE BODYWARMER IS DESIGNED TO PROVIDE WARMTH WITHOUT RESTRICTING MOVEMENT. DICKIES HAS TAKEN THIS RELATIVELY SIMPLE GARMENT AND PRODUCED SEVERAL STYLES TO SUIT DIFFERENT WORKING ENVIRONMENTS.



Redhawk Bodywarmer
page 24



Eisenhower Bodywarmer
page 47



High Visibility Reversible Bodywarmer
page 84



Utility Vest
page 158



Professional Combat Bodywarmer
page 159



Country Bodywarmer
page 167



OUTDOOR WEAR



Available in
these colours

Navy

Olive
Green



Utility Vest

- Two lower patch pockets.
- Lower bellowed pocket, with side handwarmer access and velcro fastened flap.
- Zip access pocket behind lower patch pockets.
- Right chest pocket with side zip access.
- Upper patch pocket with velcro fastened flap.
- External mobile phone pocket.
- Internal chest pocket.

Fabric 100% Rip-Stop nylon Taslan with PU water repellent coating, 280gsm. Lining polyester anti-pill polarfleece

Sizes M, L, XL, XXL

Colours Navy, Olive Green

Code BW11700



NEW
DESIGN



Professional Combat Bodywarmer

- Zip front with velcro fastened stormflap.
- Mobile phone pocket with velcro fastened flap.
- Pen pocket.
- Zipped chest pocket.
- Two zipped pockets.
- Two lower double entry velcro fastened pockets.
- Inside patch pocket with velcro fastening.
- Zipped embroidery access.
- Tail hem.
- Yarn dyed check lining.

Fabric Outer fabric 65% polyester, 35% cotton twill with water repellent finish. Inner lining 100% brushed cotton yarn dyed check

Sizes S, M, L, XL, XXL (XXXL in Navy only)

Colours Black, Green, Navy

Code BW11025



Available in these colours

Black

Green

Navy



OUTDOOR WEAR